

# Rock Table

Intro	03
Inspiration	05
Designer	07
Images	09
Technical info	43
Key values	44

# Rock Table

Designed by Jean Marie Massaud



Rock Table nel 2020 si arricchisce di nuove finiture outdoor: piano in cemento granigliato bianco, in abbinamento alla base in cemento naturale; piano in cemento granigliato verde, in abbinamento alla base in cemento verde; piano in cemento granigliato terracotta, in abbinamento alla base in cemento terracotta.

Il granigliato UHPFRC, è un cemento dalle elevate caratteristiche tecnico strutturali, colorato in massa con ossidi naturali, arricchito in superficie di graniglia composta da rocce ed inerti di origine alpina (top graniglia bianco e verde), di graniglia composta da inerti di origine Toscana (top terracotta).

Un oggetto raffinato e solido, leggero e stabile, radicale e sensuale. Lo stile unico, basato sulla semplificazione delle forme, si combina con sistemi di produzione innovativi e questo rende i tavoli Rock adatti non solo ad aree living e soggiorni moderni ma anche a contesti lavorativi, come uffici, meeting room, conference rooms dalla forte identità.

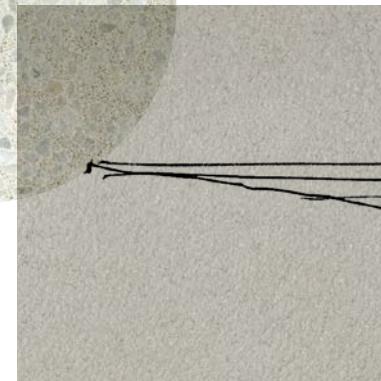
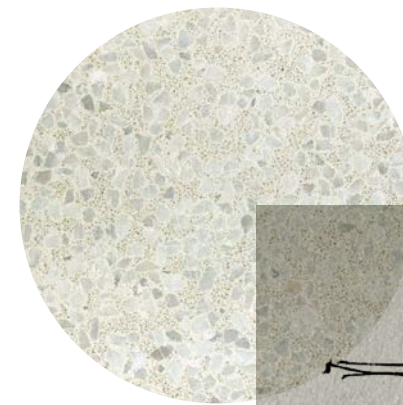
In 2020 Rock Table will be enhanced with new outdoor finishes: white stone chip cement top, combined with the natural cement base.

Green stone chip cement top, combined with a green cement base. Terracotta stone chip cement top, combined with a terracotta colour cement base.

The stone chip cement is a UHPFRC (ultra high performance, fibre reinforced cement), with high technical/structural characteristics, coloured in mass using natural oxides, enhanced with a stone chip surface made up of Alpine rocks and stones (white and green stone chip top), or stone chip made up of stones from Tuscany (terracotta top).

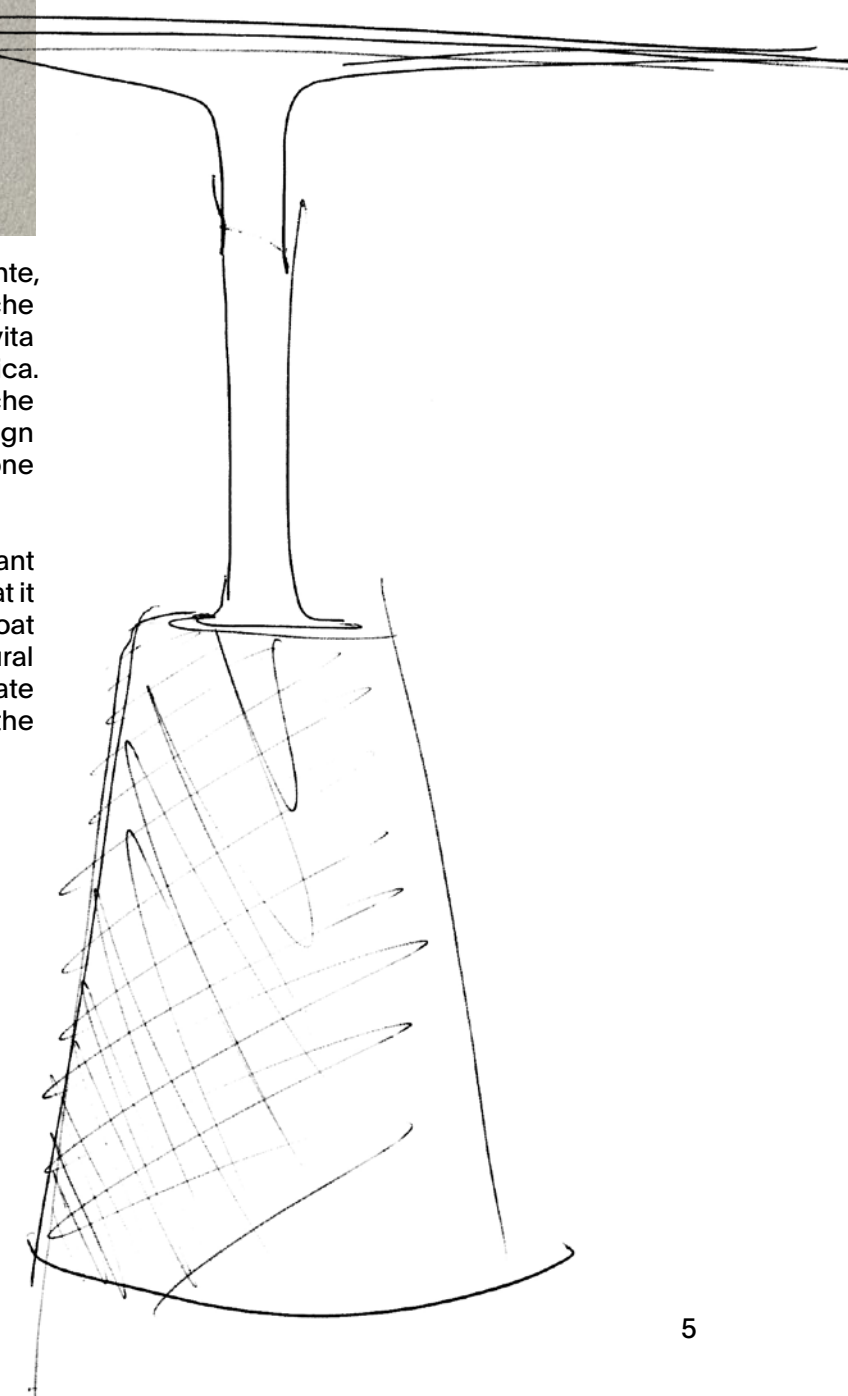
A refined solid object, light and stable, radical as well as sensual. Rock Table unique style, based on simplified shapes, is combined with innovative production systems and this makes MDF Italia tables suitable not only to modern living rooms, but also to lounge designs and working contexts, such as offices, meeting rooms, conference rooms with a strong identity.

# Inspirations



L'iconico tavolo, dalla silhouette fluida ed elegante, rivela completamente la natura di quello che rappresenta: "una tavola rotonda" che levita apparentemente sopra una solida base inorganica. Una miscela di materiali naturali e industriali, che si fondono in un prodotto unico dal design morbido nella stessa filosofia della collezione Flow.

The iconic table, with its fluid and elegant silhouette, completely reveals the nature of what it represents: "a round table" that seems to float above a solid, inorganic base. A mixture of natural and industrial materials that are blended to create a new product with a smooth design, following the same philosophy of Flow collection.





# Designer

Jean Marie Massaud si è diplomato all'ENSCI nel 1990 (scuola superiore nazionale di disegno industriale); dopo le sue prime intuizioni è alla ricerca di sintesi, riduzione e leggerezza. Affronta diversi aspetti del design: dal mobile, ai prodotti industriali, agli accessori.

Nel 2000 apre lo studio Massaud, ed estende la sua attività all'architettura e alla strategia dello sviluppo. Lavora alle produzioni più svariate tra cui ci sono collaborazioni con B&B Italia, Axor Hansgrohe, Lancome, Renault.

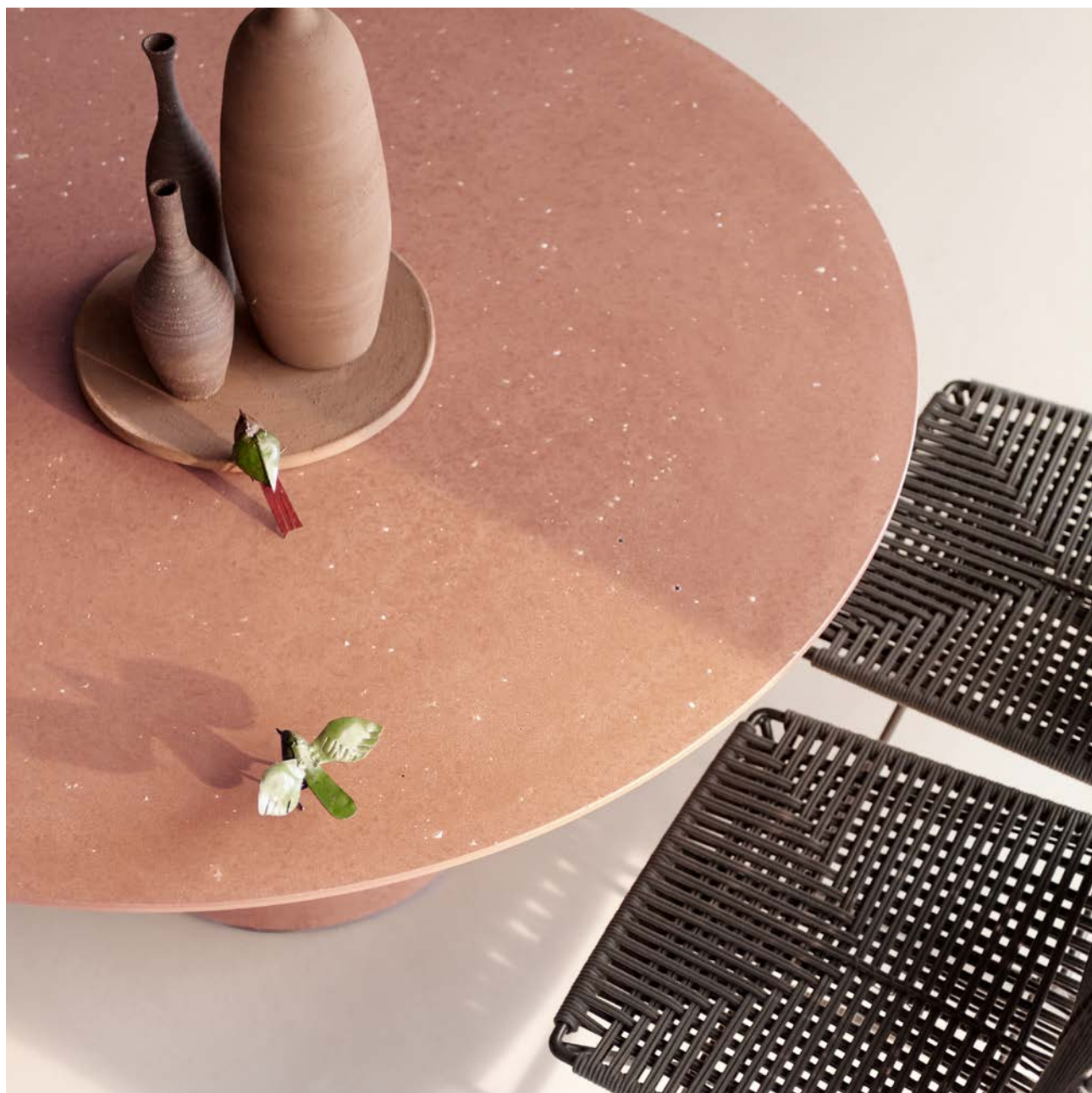
Obiettivo delle sue creazioni è di plasmare l'uomo e l'ambiente che lo circondano; questo inventore senza limiti adotta un andamento impegnato e politico e si sforza di fare di ogni progetto un'esperienza di vita e uno scenario economico che riconcili desiderio e responsabilità.

Jean Marie Massaud graduated at ENSCI in 1990 (National Institute of Industrial Design); after his first intuitions, he longed for synthesis, reduction and lightness. His interest concerned various aspects of design: from furniture to industrial products and accessories.

In 2000 he opened the studio Massaud and started to extend his activity to architecture and development strategy. He worked in the most varied sectors, from B&B Italia, Axor Hansgrohe, Lancome, to Renault.

With his creations he aims to shape man and the surrounding environment. This unlimited inventor is committed, also politically, and tries to turn any project into an experience of life and economic scenery where desire and responsibility come together.





Piano in cemento granigliato terracotta, base in cemento terracotta.  
Terracotta stone chip cement top and terracotta cement base.  
Ø140 H73









Piano in cemento granigliato verde, base in cemento verde.  
Green stone chip cement top and green cement base.  
Ø140 H73











Piano in cemento granigliato bianco, base in cemento naturale.  
 White stone chip cement top and natural cement base.  
 Ø140 H73









Piano in legno di rovere antracite texturizzato, base in cemento antracite.  
Textured anthracite oak top and anthracite cement base.  
Ø140 H73













Piano laccato opaco bianco, base in cemento naturale.  
 Matt lacquered white top with natural cement base.







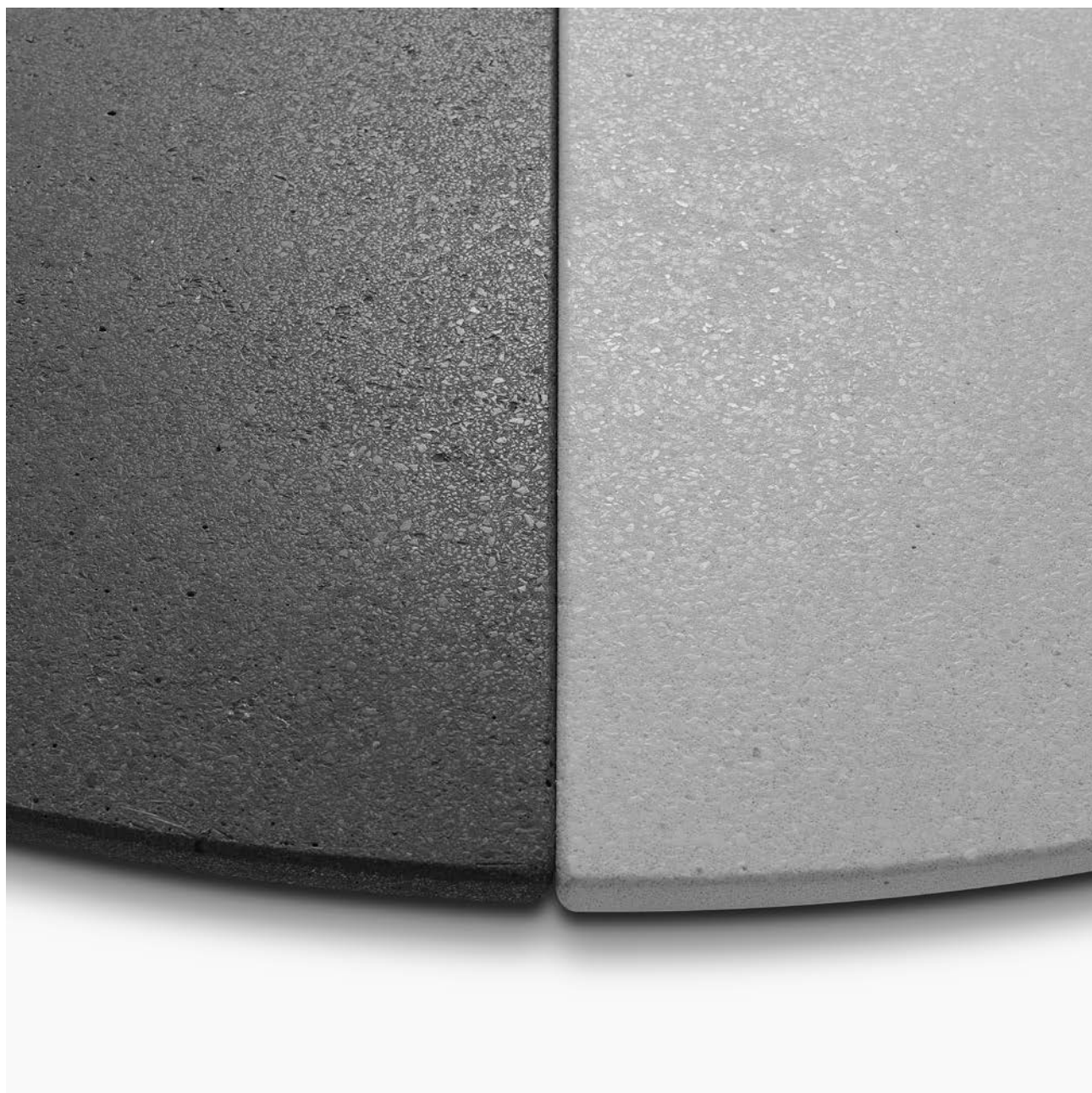
Top laccato opaco bianco da 80 cm per tavolo H110.  
Matt white lacquered top in size 80 cm, with tables in H110.











Piano in cemento antracite e cemento bianco, entrambi per uso esterno.  
 Anthracite and white cement top, both for outdoor use.







Piano in cristallo temperato fumè, base in cemento antracite.  
Smoked tempered glass top and anthracite cement base.















Base stretta per top da 80 e 100 cm.  
Narrow base with 80 and 100 cm large tabletops.

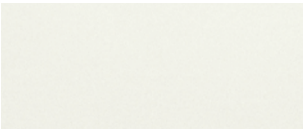


# Monochromatic combinations

## BASE CEMENTO NATURALE / NATURAL CEMENT BASE



### ABBINATA AL PIANO IN / COMBINED WITH THE TOP IN:



laccato opaco bianco  
matt lacquered white



cemento bianco  
white cement  
(outdoor/indoor use)

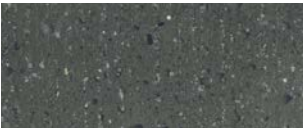


cemento granigliato  
bianco / white stone  
chip cement  
(outdoor/indoor use)



legno texturizzato  
rovere sbiancato  
bleached oak  
textured wood

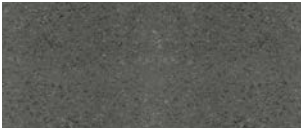
## BASE CEMENTO ANTRACITE / ANTHRACITE CEMENT BASE



### ABBINATA AL PIANO IN / COMBINED WITH THE TOP IN:



laccato opaco grigio  
grafite / matt lacquered  
graphite grey



cemento antracite  
anthracite cement  
(outdoor/indoor use)



legno texturizzato  
rovere antracite  
anthracite oak  
textured wood

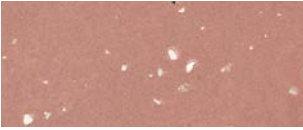


cristallo temperato  
fumè / smoked  
tempered glass

## BASE CEMENTO TERRACOTTA TERRACOTTA CEMENT BASE



### ABBINATA AL PIANO IN / COMBINED WITH THE TOP IN:



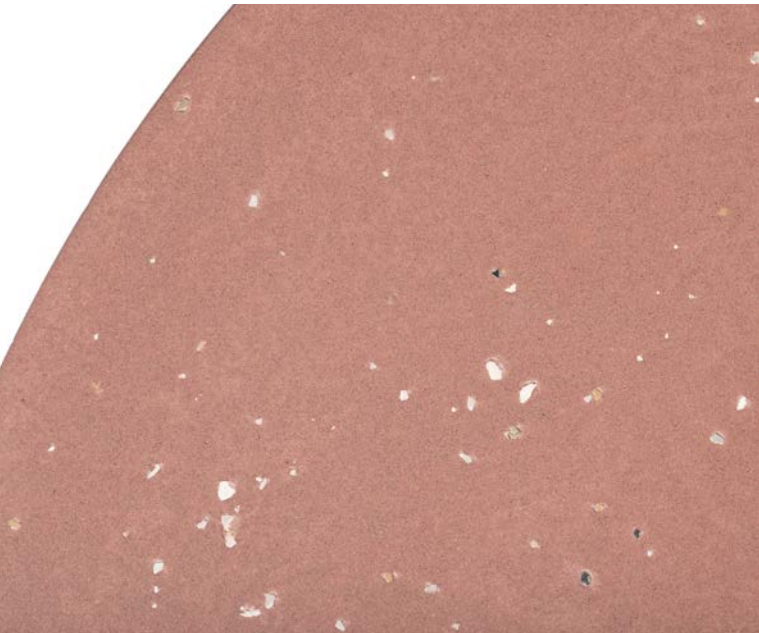
cemento granigliato  
terracotta / terracotta  
stone chip cement  
(outdoor/indoor use)

## BASE CEMENTO VERDE GREEN CEMENT BASE



cemento granigliato  
verde / green stone  
chip cement  
(outdoor/indoor use)

# Technical info



Piano in cemento granigliato terracotta  
Top in terracotta stone chip cement

## Dimensions and finishes

**TELO COPERTURA OUTDOOR**  
Telo di protezione specifico per prodotti outdoor, impermeabile, realizzato 100% poliestere, lato esterno con spalmatura acrilica e lato interno con resinato acrilico. Ad enfatizzarne le caratteristiche, il finissaggio al Teflon, totalmente fungicida.  
Ogni telo è dotato di fodera richiudibile, per essere ripiegato e conservato correttamente durante il periodo di non utilizzo.

**OUTDOOR COVERING TARPULIN**  
Protective tarpaulin specifically for outdoor products, waterproof, made of 100% polyester, outside with acrylic coating, inside with acrylic resin coating. Its characteristics are emphasised by its fully fungicidal Teflon finish.  
Each tarpaulin comes with a closable slip cover, so that it can be folded and kept correctly when not in use.

Ø140 H73		Ø120 H73	
Ø100 H73	Ø80 H73	Ø80 H110	
Outdoor covering tarpaulin Ø80 H110 Ø100 H73 Ø80 H73 Ø120 H73 Ø140 H73			
Top			
Base			



# Key values

2 heights,  
5 diameters,  
10 finishes for the top.

- . Rock table combina solidità a un design morbido
- . un tavolo resistente, dalle elevate caratteristiche tecniche
- . utilizzo di materiali innovativi (cemento UHPFRC)
- . emozioni tattili del piano materico
- . per ambienti indoor e outdoor.

- . Rock table combines solidity with a soft design
- . a resistant table with high technical characteristics
- . use of innovative materials (UHPFRC concrete)
- . deep tactile emotions of the meteoric top
- . fit for both indoor and outdoor spaces

